

EMVELIA

TECHNOLOGIES

TAKING YOU FORWARD


emvelia.com
LONDON / ATHENS





Emvelia is an Innovation Technology company creating state-of-the-art solutions.

We are pioneering the use of technology for business, taking visions and turning them into cutting-edge solutions.

A close-up photograph of a person's hand holding a dark-colored smartphone. The hand is positioned in the center-right of the frame, with the thumb and index finger visible. The background is a soft, out-of-focus light blue and white. A semi-transparent blue rectangular box is overlaid on the right side of the image, containing a list of industry sectors.

HEALTHCARE
FINANCE
DRONES
MANUFACTURING
SHIPPING
AGRICULTURE
SOUND & ACOUSTICS
ECO-TECH
ONLINE RETAIL

A close-up photograph of a metallic, articulated robotic hand reaching out from the right side of the frame. The hand is positioned just above a lush, green grassy field. In the upper left, a thick, moss-covered branch hangs down, its tip just above the robotic hand's fingers. The background is a soft, out-of-focus green field. The overall scene suggests a connection between nature and technology.

Our Mission

To improve life
through technology.

We Code Experiences_



Artificial Intelligence & Machine Learning

We harness the power of AI and machine learning to deliver outcomes that make the world a better place for everyone.



Application Programming Interfaces

We build scalable and secure APIs that connect to any device, machine or software.



Human Machine Interfaces

From versatile touchscreens to intuitive joystick control, we create interfaces for humans to interact with machines.



Internet of Things

We improve interoperability, automation, control and data collection by building bridges to get machines talking to each other.



Web Apps & Marketplaces

We take websites to the next level, creating cross-platform solutions that work seamlessly on all browsers and adapted to specific industries.



Hybrid Apps

We develop unique codebases for hybrid applications with greater efficiency and scalability across all mobile devices.



Augmented & Virtual Reality

We blend the real and digital worlds to spark collaboration and interactivity across any industry through the power of enriched visual media.

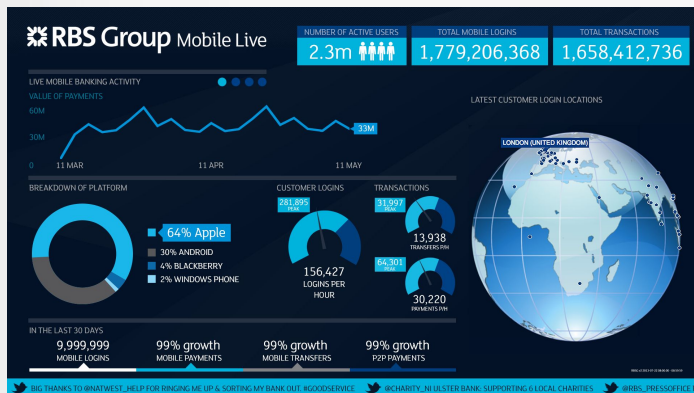


Blockchain & Distributed Ledger Technology

We help businesses improve transparency and data protection through DLT solutions.

Real-Time Data Processing & Visualisation

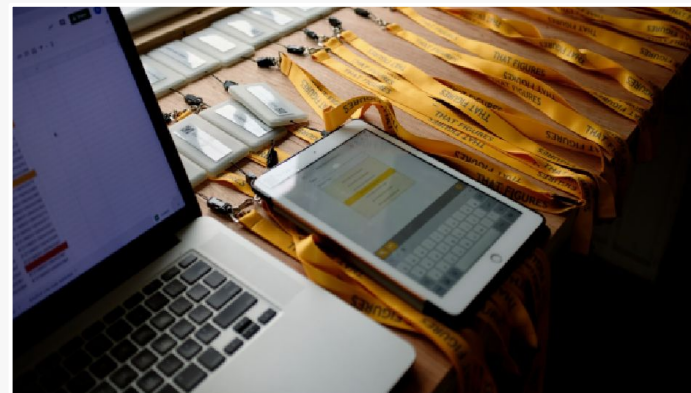
Our solutions exploit the latest technology to optimise business processes and revolutionise industries.



Real-Time Transactions

Royal Bank of Scotland Group / Banking / UK

#fintech #payments #realtime #bigdata



Real-Time Diagnostics

Spatial Quotient / Healthcare / UK

#wearables #realtime #iot #bigdata #machine-learning #sensors

Real-Time Energy Efficiency & Management

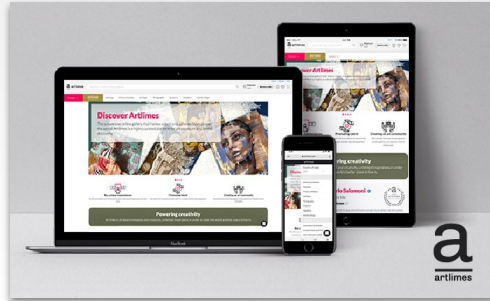


OPTIMIZER 4.0 - Energy Efficiency in Real-Time
Atlas Copco / Manufacturing / Belgium

#realtime #bigdata #energy #iot # #isocertified

Our Products & Spin-outs

artlimes.com Production Release



PaaS / Marketplace / Art, Design, NFT

Artlimes.com is the most innovative global marketplace for Art, Design & Collectibles, making online retail for original items and NFT, easy for artists, galleries, luxury retailers, collectors and the new-connoisseurs.

[Visit Website](#)

eEmergency Platform Production Release



Remote Healthcare / Wearables

24/7 real-time personal protection and monitoring at home or outside. Complete patient profiles with GPS and biometrical data, offering patients remote healthcare assistance and monitoring by teams and organisations.

[Demo on request](#)

HydroSense & Hydro AI R&D Stage



Maritime / Environmental / AI

A state-of-the-art, eco-friendly, energy efficient and fully autonomous AI aquadrone, built to solve the ongoing problem of surface waste, microplastics and dirty waters in ports, marinas and the open sea.

[Visit Website](#)

How We Impact



Social Impact

We work with dynamic technologies, new sensations, new ways of doing business.

We understand innovation and its social impact on enterprises, and we ensure that technology innovation furthers societal growth.



Impact Investment

We develop innovative technology for the greater good. We are at the crossroads of technology, innovation, and sustainability where AI has the ability to make a dramatic impact on ESG investing.



Art & Culture

Artlimes stands for democratisation of art, we envision a world where people have easy access to affordable masterpieces that come from emerging and subversive artists from all around the world.

Projects & Clients_



HELLENIC REPUBLIC
Ministry of Digital Governance



Reckitt
Benckiser
HEALTH · HYGIENE · HOME



TRANSPORT
FOR LONDON
EVERY JOURNEY MATTERS

Harrods



The Royal Bank of Scotland



Sainsbury's



ASSOCIATED BOARD OF THE
ROYAL SCHOOLS OF MUSIC



SEA ERGON®
MARINE LTD.

mayor of
london's green
procurement
code



UK National Centre for Computer
Animation



Our Offices_



London, United Kingdom

85 Great Portland street
W1W 7LT, London
United Kingdom



Athens, Greece

23 Katechaki Street
115 25, Athens
Greece

EMVELIA

TECHNOLOGIES

TAKING YOU FORWARD

emvelia.com
LONDON / ATHENS

contact@emvelia.com

